



WE ARE

THE PEOPLE

OF GOD



WHAT

Intentionally entering God's presence through Spirit-filled gatherings and devotions

Seeing the goodness of God throughout the Bible and in every circumstance of life

HOW

Looking on the face of Christ

WHY

To bring the life of Jesus and His kingdom wherever we are  
(Ez 47:9)

Loving everyone we meet

Living like heaven is near

Every member in ministry fulfilling their Spirit-led calling

Courageously expecting God to do the impossible through every one of us

Serving communities near and far, sharing good news and building relationships

Building relational, radical and inclusive communities of Jesus followers

Every



**Every** member




Every member in




Every member in ministry





***“The body is a unit, though it is made up of many parts; and though all its parts are many, they form one body. So it is with Christ.”***

1 Corinthians 12:12

- 
- **Body ministry**
  - **Presbytery model of leadership**
  - **Leadership with accountability**



***“It seemed good to the **Holy Spirit**  
and to **us** not to burden you with  
anything beyond the following  
requirements...”***

Acts 15:28

# Empowered Valued Placed



Every **Member** in ministry



- 
- A photograph of three young women sitting in a circle in a field of tulips. They are holding hands in a supportive gesture. The woman on the left is wearing a red and white striped shirt and blue jeans. The woman in the middle is wearing a light-colored top and blue jeans. The woman on the right is wearing a light blue denim shirt and blue jeans. The background is a field of tulips in various colors.
- **Openness in relationships**
  - **Genuine commitment**
  - **Love and service**
  - **Life learners**

***Build the **body** build the **world*****

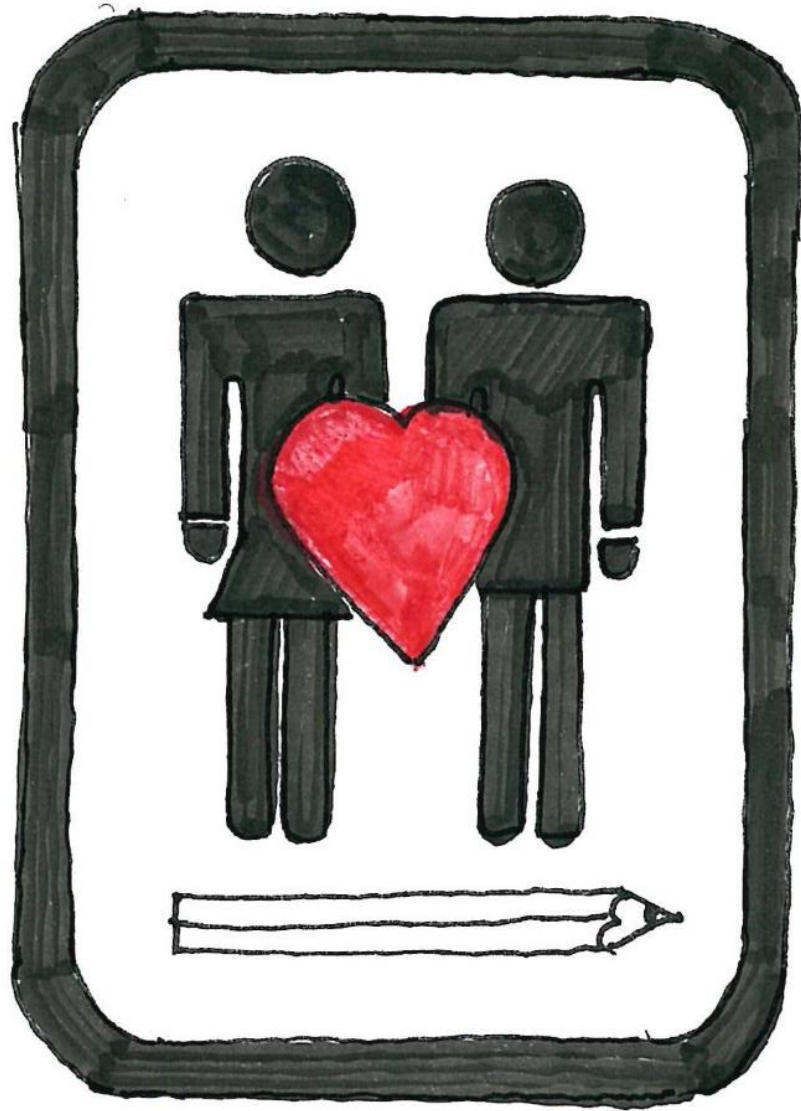


A close-up, top-down view of clear, rippling blue water. The surface is covered in intricate, concentric ripples and patterns of light and shadow, creating a complex, organic texture. Sunlight reflects off the water, creating bright, shimmering spots and highlights. The overall color palette is a range of blues, from deep cerulean to bright, almost white highlights where the light reflects.

*Clarity of purpose*

# **Creative People System**







***Your ministry is all you bring to life  
and our world.***



THE WORLD IS YOURS

